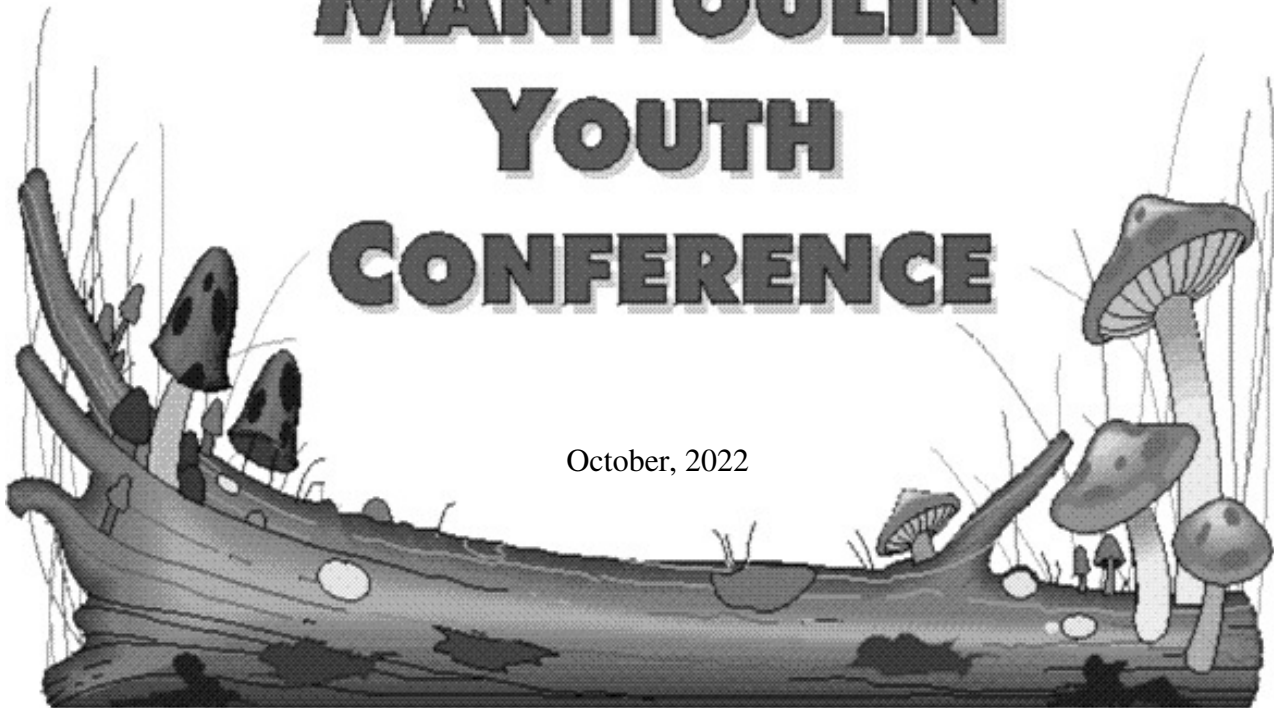


Colossians

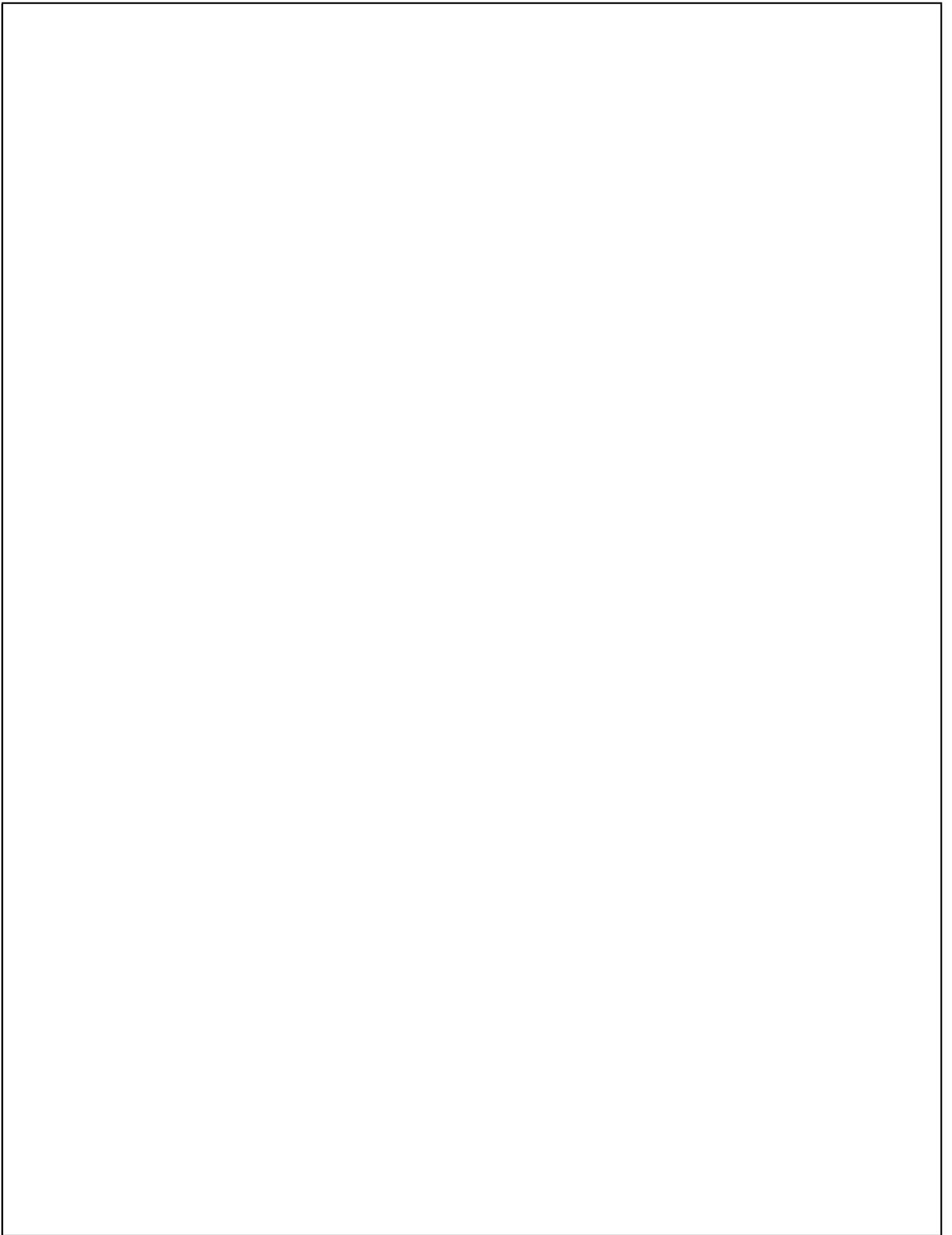
MANITOULIN YOUTH CONFERENCE

October, 2022



Detailed Graphical Evaluation Report

Overall Summary



Overall Summary	Number of Surveys: 92
<h2>Identification</h2>	
1a. I am	<div> <div>male</div> <div>53%</div> </div> <div> <div>female</div> <div>47%</div> </div> <div>Responses: 92</div>
1b. I am	<div> <div>baptized</div> <div>91%</div> </div> <div> <div>unbaptized</div> <div>9%</div> </div> <div>Responses: 89</div>
1c. I am	<div> <div>an attendee</div> <div>68%</div> </div> <div> <div>a camp group coordinator</div> <div>13%</div> </div> <div> <div>a part-time support staff</div> <div>9%</div> </div> <div> <div>a full-time support staff</div> <div>7%</div> </div> <div> <div>a committee member</div> <div>3%</div> </div> <div>Responses: 87</div>
1d. I am	<div> <div>under 21</div> <div>47%</div> </div> <div> <div>21-25</div> <div>26%</div> </div> <div> <div>26-30</div> <div>10%</div> </div> <div> <div>over 30</div> <div>16%</div> </div> <div>Responses: 91</div>
2. How many times have you attended Youth Conference?	<div> <div>1</div> <div>54%</div> </div> <div> <div>2-3</div> <div>14%</div> </div> <div> <div>4-5</div> <div>14%</div> </div> <div> <div>more than 5</div> <div>18%</div> </div> <div>Responses: 91</div>

Overall Summary	Number of Surveys: 92
<h2>Fundamental Concepts</h2>	
<p>3. It is important for us to strengthen each other in the discussion of God's Word.</p>	
<div> <div>disagree 0%</div> <div>undecided 0%</div> <div>agree 4%</div> <div>strongly agree 96%</div> </div>	
Responses: 92	
<p>4. The Youth Conference is a good way to increase our understanding and encourage our application of divine principle.</p>	
<div> <div>disagree 0%</div> <div>undecided 0%</div> <div>agree 12%</div> <div>strongly agree 88%</div> </div>	
Responses: 91	
<p>5. The Youth Conference rules and guidelines are fair and reasonable.</p>	
<div> <div>disagree 0%</div> <div>undecided 13%</div> <div>agree 47%</div> <div>strongly agree 40%</div> </div>	
Responses: 91	
<p>6. The Youth Conference rules and guidelines were enforced appropriately through the week.</p>	
<div> <div>disagree 1%</div> <div>undecided 7%</div> <div>agree 46%</div> <div>strongly agree 47%</div> </div>	
Responses: 92	

Overall Summary	Number of Surveys: 92
<h2>Preparation</h2>	
<p>7. The workbook (study guide) was an excellent means of studying.</p> <p>disagree 3%</p> <p>undecided 12%</p> <p>agree 52%</p> <p>strongly agree 26%</p> <p>did not use 7%</p> <p>Responses: 92</p>	
<p>8. I completed the workbook:</p> <p>by working on it regularly since January 10%</p> <p>by working on it regularly during the summer 27%</p> <p>mostly in a four week period 25%</p> <p>mostly in a two week period 17%</p> <p>other: 21%</p> <p>Responses: 92</p>	
<p>10. The website was useful and informative.</p> <p>disagree 20%</p> <p>undecided 24%</p> <p>agree 39%</p> <p>strongly agree 12%</p> <p>never visited the site 5%</p> <p>Responses: 92</p>	
<p>11. Did you find the information and assistance provided to you before conference helpful in preparing for conference?</p> <p>very helpful 70%</p> <p>somewhat helpful 30%</p> <p>not helpful at all 0%</p> <p>Responses: 89</p>	

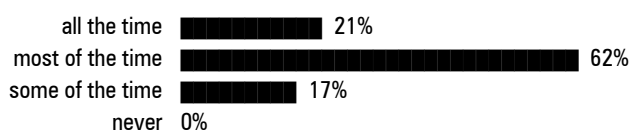
Overall Summary	Number of Surveys: 92
<h2>Accommodations/Food</h2>	
<p>12a. How much food was supplied to you for breakfast?</p> <p>too little ■ 2%</p> <p>just the right amount ■ 94%</p> <p>too much ■ 3%</p> <p>Responses: 88</p>	
<p>12b. How much food was supplied to you for lunch?</p> <p>too little ■ 5%</p> <p>just the right amount ■ 54%</p> <p>too much ■ 41%</p> <p>Responses: 91</p>	
<p>12c. How much food was supplied to you for supper?</p> <p>too little ■ 1%</p> <p>just the right amount ■ 54%</p> <p>too much ■ 45%</p> <p>Responses: 91</p>	
<p>13a. The quality of food provided for breakfast was good.</p> <p>disagree 0%</p> <p>undecided ■ 11%</p> <p>agree ■ 29%</p> <p>strongly agree ■ 60%</p> <p>Responses: 87</p>	
<p>13b. The quality of food provided for lunch was good.</p> <p>disagree ■ 1%</p> <p>undecided ■ 4%</p> <p>agree ■ 40%</p> <p>strongly agree ■ 54%</p> <p>Responses: 89</p>	
<p>13c. The quality of food provided for supper was good.</p> <p>disagree ■ 1%</p> <p>undecided ■ 1%</p> <p>agree ■ 34%</p> <p>strongly agree ■ 64%</p> <p>Responses: 89</p>	

Overall Summary	Number of Surveys: 92
14. The procedure for picking up the food worked well for getting what our camp group needed?	
<div> <div>disagree</div> <div>undecided</div> <div>agree</div> <div>strongly agree</div> </div> <div> <div>1%</div> <div>1%</div> <div>26%</div> <div>71%</div> </div>	
Responses: 91	
16. Did you have comfortable sleeping facilities?	
<div> <div>yes</div> <div>no</div> </div> <div> <div>99%</div> <div>1%</div> </div>	
Responses: 92	
17. The washroom facilities were adequate for the conference.	
<div> <div>disagree</div> <div>undecided</div> <div>agree</div> <div>strongly agree</div> </div> <div> <div>2%</div> <div>3%</div> <div>47%</div> <div>48%</div> </div>	
Responses: 92	
18. Overall the accommodations and food were good.	
<div> <div>disagree</div> <div>undecided</div> <div>agree</div> <div>strongly agree</div> </div> <div> <div>1%</div> <div>0%</div> <div>45%</div> <div>54%</div> </div>	
Responses: 92	

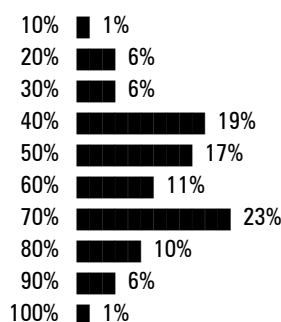
Overall Summary

Number of Surveys: 92

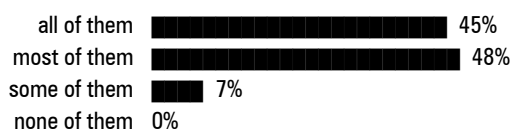
Discussion Groups

19. Did the discussion classes help to clarify the meaning of the scripture?

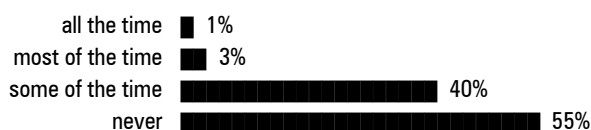
Responses: 89

20. Approximately what percentage of the time was spent on the practical application of the message?

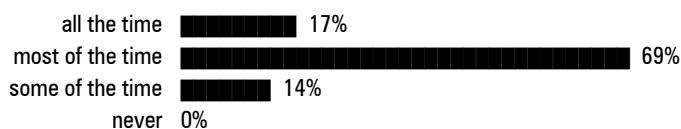
Responses: 88

21. Were the discussion leaders well prepared?

Responses: 88

22. Was the discussion group dominated by one or two people?

Responses: 87

23. Did the discussion classes keep on track, following the outline for the discussion?

Responses: 86

Overall Summary	Number of Surveys: 92
Program	
24. The craft classes were enjoyable.	
disagree 0% undecided ■ 1% agree ■ 3% strongly agree ■ 10% did not attend ■ 86%	Responses: 91
25. The afternoon sports program was enjoyable.	
disagree 0% undecided ■ 4% agree ■ 33% strongly agree ■ 22% did not attend ■ 41%	Responses: 92
26. The crazy Olympics program was enjoyable.	
disagree ■ 1% undecided ■ 3% agree ■ 43% strongly agree ■ 47% did not attend ■ 5%	Responses: 92
27. The afternoon swimming was enjoyable.	
disagree 0% undecided ■ 2% agree ■ 13% strongly agree ■ 9% did not attend ■ 76%	Responses: 92
28. The wrap up studies complemented the discussion group material.	
disagree ■ 5% undecided ■ 24% agree ■ 41% strongly agree ■ 29%	Responses: 92

Overall Summary	Number of Surveys: 92
<p>29. The evening programs were helpful studies.</p> <div> <div>disagree</div> <div>undecided</div> <div>agree</div> <div>strongly agree</div> </div> <div> <div>4%</div> <div>18%</div> <div>51%</div> <div>27%</div> </div> <p>Responses: 91</p>	
<p>30. The hymn singing provided a fitting close to the day's activities.</p> <div> <div>disagree</div> <div>undecided</div> <div>agree</div> <div>strongly agree</div> <div>did not attend</div> </div> <div> <div>0%</div> <div>0%</div> <div>21%</div> <div>76%</div> <div>3%</div> </div> <p>Responses: 92</p>	
<p>31. The devotionals provided a fitting close to the day's activities.</p> <div> <div>disagree</div> <div>undecided</div> <div>agree</div> <div>strongly agree</div> </div> <div> <div>1%</div> <div>2%</div> <div>16%</div> <div>80%</div> </div> <p>Responses: 91</p>	
<p>32. I found the evening seminars to be informative and useful.</p> <div> <div>disagree</div> <div>undecided</div> <div>agree</div> <div>strongly agree</div> <div>did not attend</div> </div> <div> <div>0%</div> <div>13%</div> <div>48%</div> <div>37%</div> <div>1%</div> </div> <p>Responses: 91</p>	
<p>33. As a participant I found the choir program to be an enjoyable experience.</p> <div> <div>disagree</div> <div>undecided</div> <div>agree</div> <div>strongly agree</div> <div>did not attend</div> </div> <div> <div>0%</div> <div>0%</div> <div>7%</div> <div>65%</div> <div>28%</div> </div> <p>Responses: 92</p>	

Overall Summary	Number of Surveys: 92
<p><i>34. As a participant I found the opening ice breakers on the first Saturday to be an enjoyable experience.</i></p> <div><div><div>disagree</div><div>undecided</div><div>agree</div><div>strongly agree</div><div>did not attend</div></div><div><div>1%</div><div>12%</div><div>41%</div><div>27%</div><div>19%</div></div></div>	
Responses: 91	

